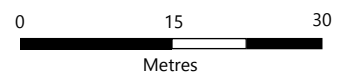




- Legend
- Land
  - House Numbers
  - 2m Contours
  - ⊕ Railway Stations
  - Railway Line

This map has been produced with the most current data available to Council as supplied by various sources. INFORMATION IN THIS MAP IS SUBJECT TO COPYRIGHT and is for internal use only. Council is not responsible for any inaccuracies in the data provided. Contact Council's Information Management Team (ph. 9710 0601) for more information.



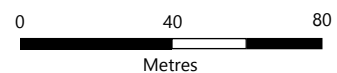
at A4 Scale 1: 750

Printed: 27/05/2020

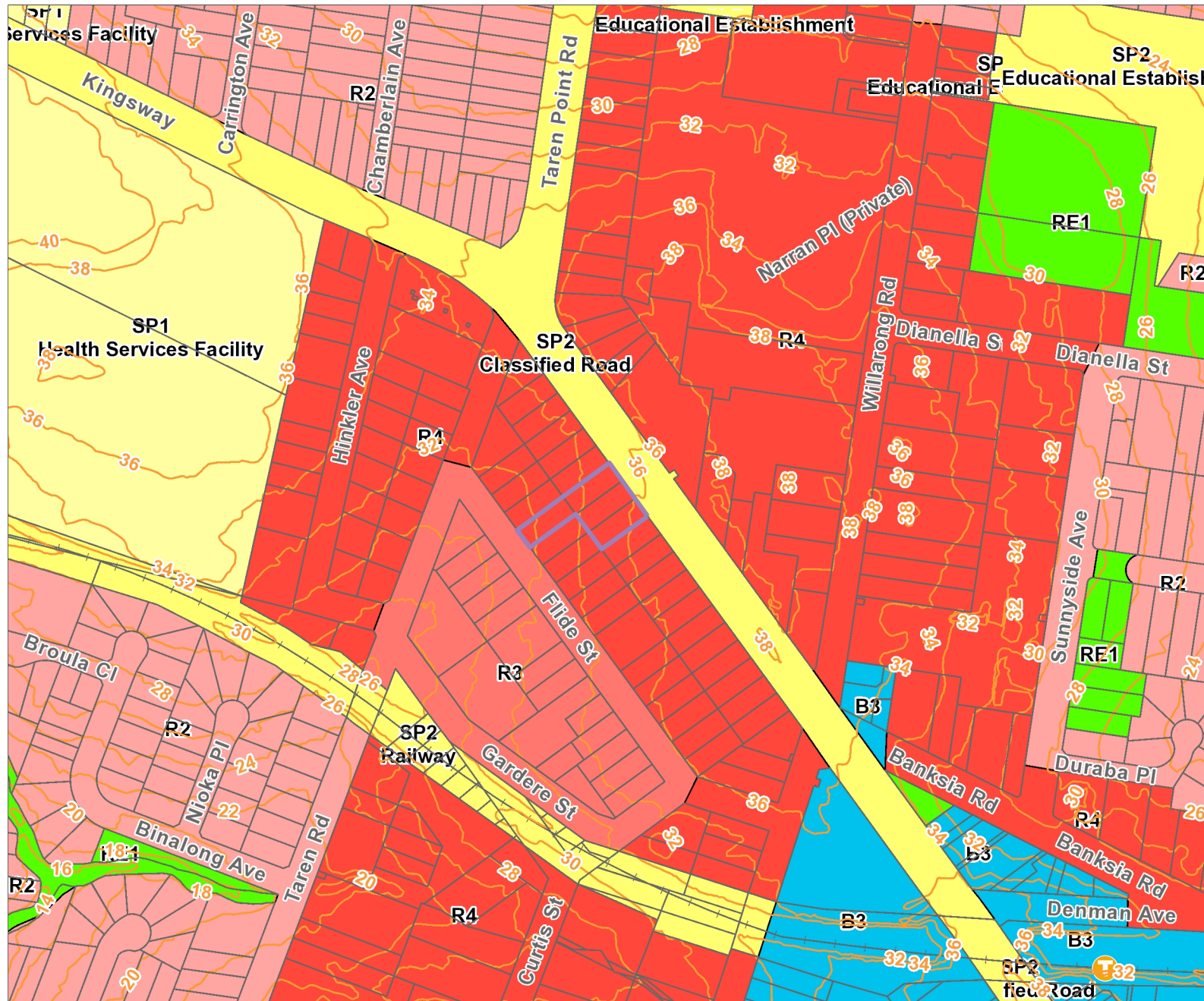


- Legend
- Land
  - House Numbers
  - 2m Contours
  - 🚂 Railway Stations
  - + Railway Line

This map has been produced with the most current data available to Council as supplied by various sources. INFORMATION IN THIS MAP IS SUBJECT TO COPYRIGHT and is for internal use only. Council is not responsible for any inaccuracies in the data provided. Contact Council's Information Management Team (ph. 9710 0601) for more information.



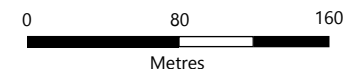
Printed: 27/05/2020



Legend

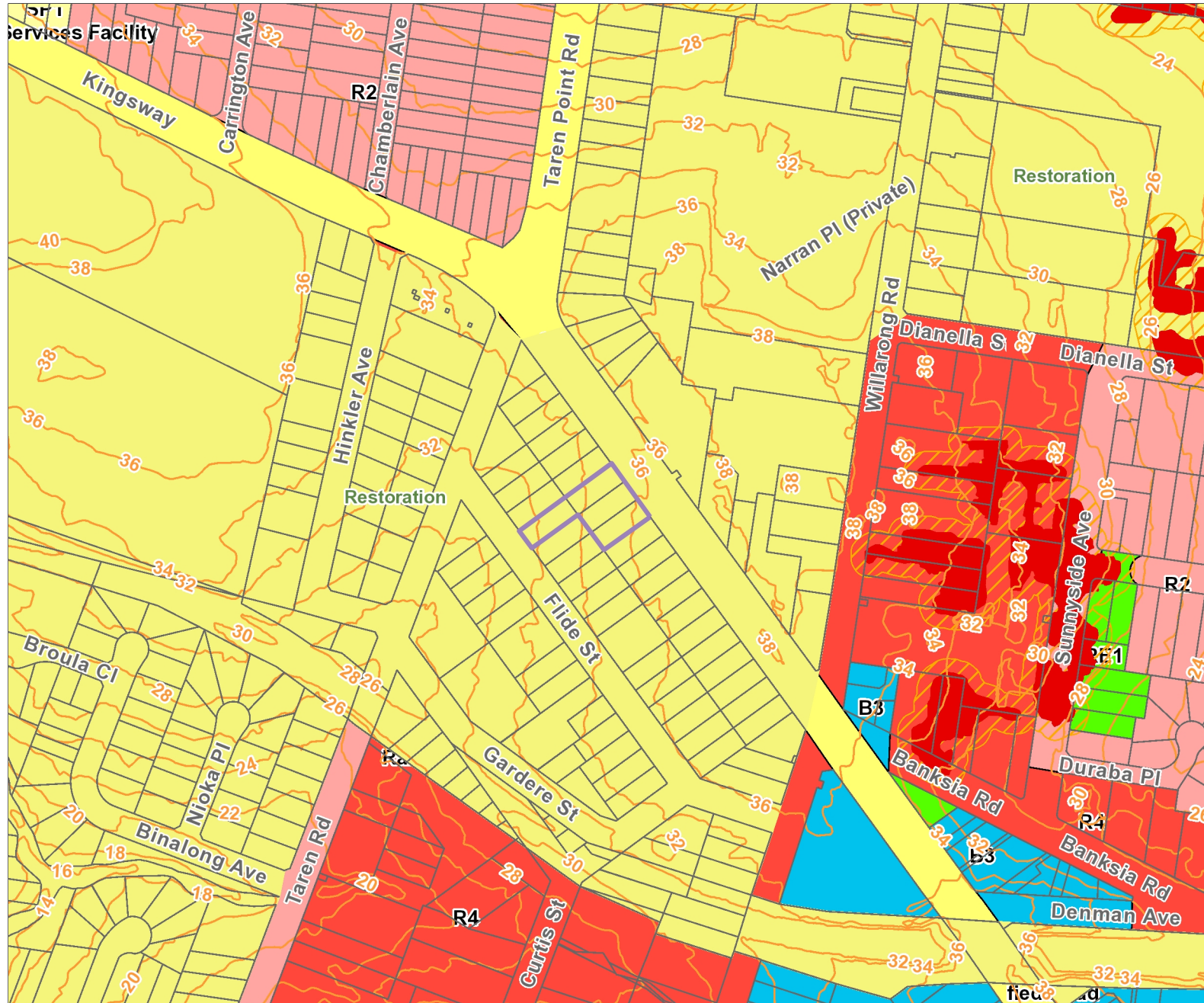
- Land
- 2m Contours
- Railway Stations
- Railway Line
- Proposed Amendments
- LZN-Land Zoning**
- B1 Neighbourhood Centre
- B2 Local Centre
- B3 Commercial Core
- B4 Mixed Use
- B5 Business Development
- B6 Enterprise Corridor
- B7 Business Park
- E1 National Parks and Nature Reserves
- E2 Environmental Conservation
- E3 Environmental Management
- E4 Environmental Living
- IN1 General Industrial
- IN2 Light Industrial
- IN3 Heavy Industrial
- IN4 Working Waterfront
- R2 Low Density Residential
- R3 Medium Density Residential
- R4 High Density Residential
- RE1 Public Recreation
- RE2 Private Recreation

This map has been produced with the most current data available to Council as supplied by various sources. INFORMATION IN THIS MAP IS SUBJECT TO COPYRIGHT and is for internal use only. Council is not responsible for any inaccuracies in the data provided. Contact Council's Information Management Team (ph. 9710 0601) for more information.



at A4 Scale 1:4,000

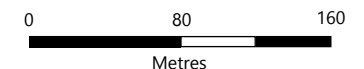
Printed: 27/05/2020



Legend

- Land
- 2m Contours
- DCP EEC 2015
- <all other values>
- O'Hares Creek Shale Forest Complex
- Posidonia
- Posidonia/Halophila
- Posidonia/Zostera
- Posidonia/Zostera/Halophila
- Taren Point Shorebird Community
- S\_DSF13: Southern Sydney Sheltered Forest
- S\_DSF14: Sydney Ironstone Bloodwood-Silvertop Ash Forest
- S\_DSF21: Coastal Sand Bangalay Forest
- River-Flat Eucalypt Forest
- S\_FoW01: Coastal Alluvial Bangalay Forest
- S\_FoW06: Cumberland Riverflat Forest
- S\_FoW09: Hinterland Riverflat Eucalypt Forest
- Swamp Sclerophyll Forest
- S\_FoW02: Coastal Flats Swamp Mahogany Forest
- S\_FoW05: Riverflat Paperbark Swamp Forest
- Swamp Oak Floodplain Forest
- S\_FoW08: Estuarine Swamp Oak Forest
- S\_FoW12: Coastal Swamp Paperbark-Swamp Oak Scrub
- S\_FrW06: Estuarine Reedland

This map has been produced with the most current data available to Council as supplied by various sources. INFORMATION IN THIS MAP IS SUBJECT TO COPYRIGHT and is for internal use only. Council is not responsible for any inaccuracies in the data provided. Contact Council's Information Management Team (ph. 9710 0601) for more information.



at A4 Scale 1: 4,000

Printed: 27/05/2020

# DA19/0786 – 398 – 402 Kingsway and 27 Flide Street, Caringbah

398 to 402 Kingsway, Caringbah



27 Flide Street, Caringbah



## Flide Street Streetscape



**23 and 25 Flide Street, Caringbah**





**25 Flide Street (back yard)**



**25 Flide Street (back yard)**



**23 Flide Street, Caringbah**  
**(vegetation etc situated adjacent to the rear boundary)**



**23 Flide Street, Caringbah**

**(vegetation etc situated adjacent to the rear boundary)**

